



**Trinity College Dublin**

Coláiste na Tríonóide, Baile Átha Cliath

The University of Dublin

# **Inbound Global Mobility Information & Q&A (Non-EU Visiting and Exchange students) Semester 2, 2025**

**Global Mobility, Trinity Global**

**Trinity College Dublin, The University of Dublin**

**January 2025**

# TODAY'S SESSION

- Welcome & Introduction
- Academics
- Resources (International Tutor)
- End of Semester Information
- Academic Year Calendar
- Getting Familiar with Trinity (map, jargon busters)
- Student Life (Clubs, Societies,
- Student Life Resources (Health, Safety, Wellbeing)
- Sustainability
- Check List
- Q & A

# You're very welcome to Trinity College Dublin

Trinity welcomes visiting and exchange students from all over the world!



# Introduction: Global Mobility Team, Trinity Global

Your first point of contact while at Trinity: [Global.Mobility@tcd.ie](mailto:Global.Mobility@tcd.ie)



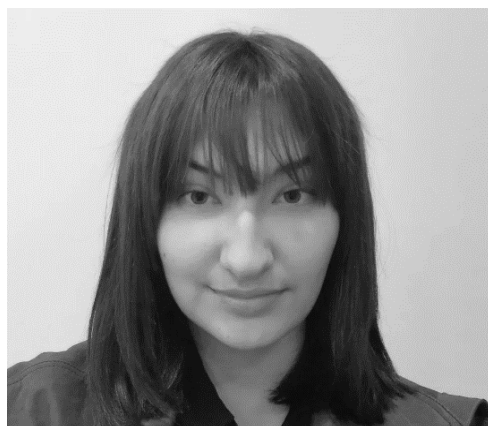
Heather Hodges  
Global Mobility Manager



Wanjiku Wainaina  
Global Mobility Officer



Jaishree Malik  
Student Support  
Officer



Maya Powers  
Global Ambassador

# Global Mobility: Advising Hub

**Location:** Arts Block

**Open in person this week –**

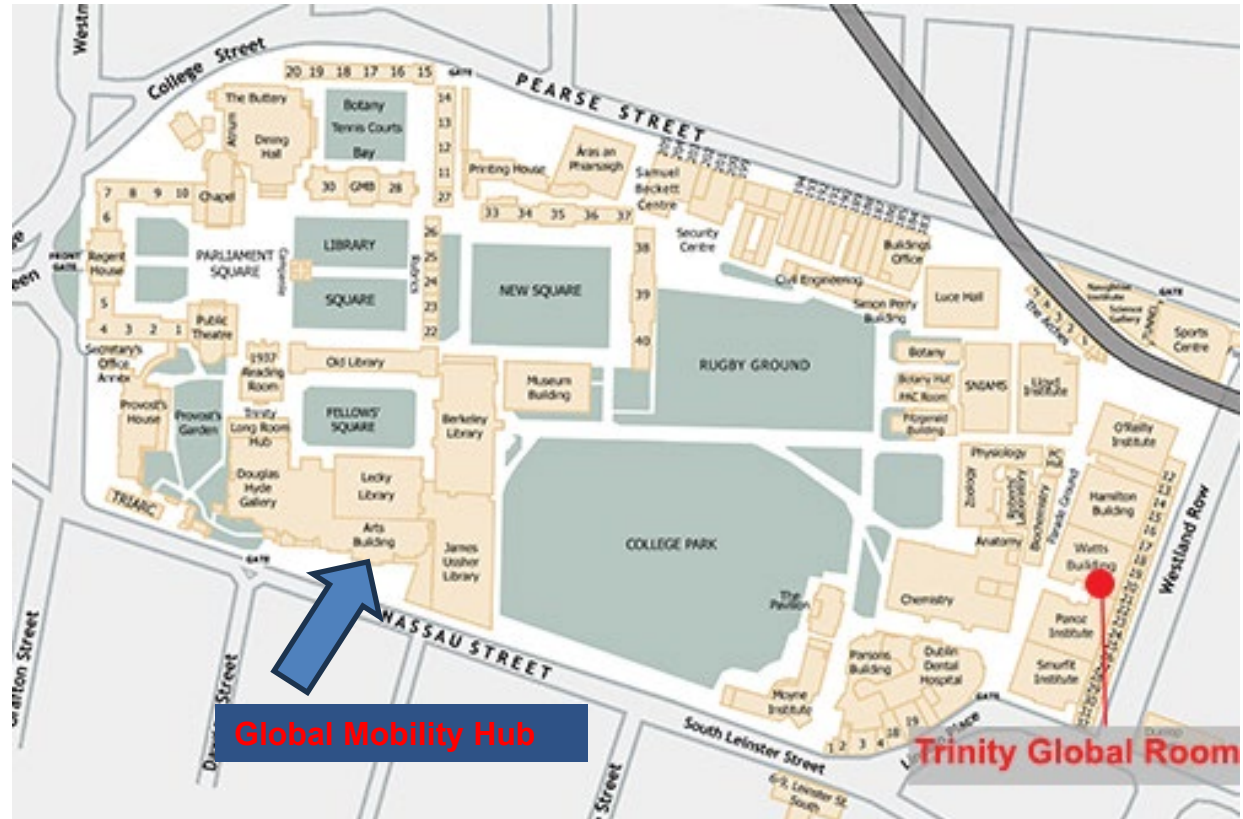
**Wednesday 10 a.m. - 12 p.m.; 2 p.m. - 5 p.m.**

**Thursday 10 a.m. - 1:00 p.m. and 2:00 p.m. - 5:00 p.m.**

**Email:** [global.mobility@tcd.ie](mailto:global.mobility@tcd.ie)

**Instagram:** @TCDglobalmobility

**Make an appointment with the team or drop by!**



# Academic Adjustment

- Common Areas of Academic Culture Shock
  - New educational context, strong focus on independent learning
  - Library Hours, Marking System, Academic Procedures, etc.
- Academic procedures
  - May be more strict than home university, e.g. formal processes for withdrawal after module enrolment deadline, 're-grading' 're-sits' requests
- Marking System
  - Marking systems differ internationally
  - Check w/ home university or programme re- credit transfer

Degree Classification	Grade	Percentage Range
First Class Honours	I	70-100%
Second Class Honours, First Division	II.1	60-69%
Second Class Honours, Second Division	II.2	50-59%
Third Class Honours	III	40-49%
Fail	F1	30-39%
	F2	Below 29%

# Office of International Tutor



**Professor Emma Stokes**  
**Vice President for Global Engagement**

- Please note for first point of contact and general queries please reach out to [Global.Mobility@tcd.ie](mailto:Global.Mobility@tcd.ie)
- For support for academics in case of extenuating circumstances e.g. serious illness, bereavement, etc..
- Contact via email: [International.Tutor@tcd.ie](mailto:International.Tutor@tcd.ie)

[Watch Video](#)

# End of Semester Information

- Exam Procedures
  - Consult [SLD website](#) for advice/tips and resources, [Students' Union advice](#), as well as [AR's Exams pages](#) and the [Senior Tutor's Exam Procedures section](#)
- Marks
  - Marks will be available through your [my.tcd.ie](https://my.tcd.ie) portal after the semester finishes and results are available
- Transcripts
  - A transcript will automatically be issued to your home university or programme for the credit transfer process
  - To order your own transcripts you can order them here under the Visiting/Erasmus drop-down once your transcripts are ready: <https://www.tcd.ie/academicregistry/service-desk/transcripts/>



# Academic Calendar

## Hilary Term/ Spring Semester 2025

**Orientation Week**

Monday 13th - Friday 17th January

**Teaching Term Starts**

Monday 20th January

**Reading Week**

Monday 3rd – 7th March

**Assessment / Exam Week**

Monday 21st April – Saturday 3rd May

**Students cannot depart prior to the end of Trinity assessments**

Students can find the full year calendar here: <https://www.tcd.ie/calendar/>

# Getting Familiar with Trinity

- [Trinity Jargon Buster](#) to get familiar with Trinity terms
- Study Abroad & Trinity terms
  - You'll hear 'study abroad', 'visiting' and 'exchange' for students studying at Trinity for a semester or year from *outside the EU* (Erasmus and EU Visiting have separate processes)
  - Modules are classes
  - Courses are the full-degree programme of study
- Interactive Campus Map
  - <https://www.tcd.ie/Maps/>



# STUDENT LIFE

## *Get involved in Student Life!*

- Clubs, Societies and Sports
  - Nearly 200 Clubs, Societies and Sports groups at Trinity
  - Sign up here:  
<https://trinitysocietieshub.com/>
  - *The best way to meet other students and get involved in student life!*
- College Events
  - Global Room events
    - New2Dublin Programme
    - Follow Global Room Social Media
    - <https://www.tcd.ie/study/international/student-experience/global-room.php>
  - Trinity Events page:  
[https://www.tcd.ie/news\\_events/events/](https://www.tcd.ie/news_events/events/)





# STUDENT LIFE

## College Events

- [Global Room events](#)
  - New2Dublin Programme
  - Follow Global Room Social Media
- [Trinity Events page](#)
- Follow The Global Room @TCDGlobalRoom on Instagram for information on student events
- Follow TCD Global Mobility @TCDGlobalMobility on Instagram for mobility-related updates



@TCDGlobalRoom



@TCDGlobalMobility

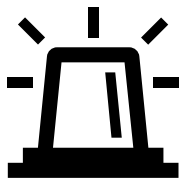


# Student Supports

- **General Support**
  - Global Mobility team [global.mobility@tcd.ie](mailto:global.mobility@tcd.ie)
  - Administrative support: [Academic Registry](#)
- **Academic Support at Trinity**
  - [Student Learning Development](#) for great Guides for studying at Trinity, workshops and advising
  - [Disability Service](#) (register ASAP if needed for any disability or special learning needs)
  - Academic Schools/Depts. and [Global Officers](#)
  - International Tutor for academic appeals: [International.Tutor@tcd.ie](mailto:International.Tutor@tcd.ie)
- **Student Supports at Trinity**
  - [Trinity's Global Room](#) – follow on social media!
  - [Student Counselling](#)
  - [Students' Union](#)



# Health & Safety, Emergencies



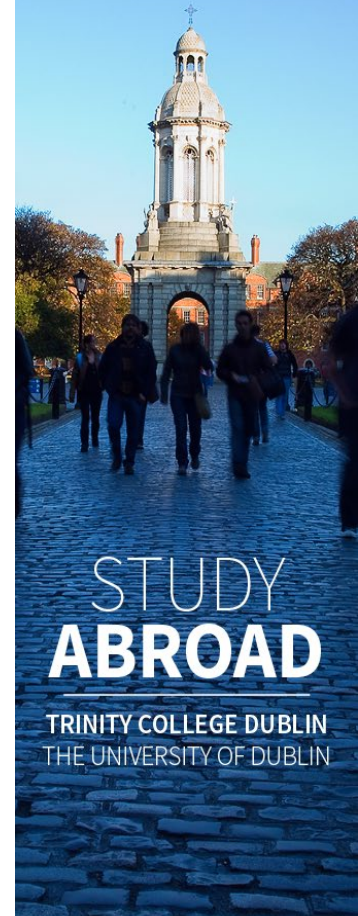
- Make sure you have a phone that works in Ireland
  - See [Pre-Arrival Guide](#) for recommendations
- College Health Service: <https://www.tcd.ie/collegehealth/>
- National emergency numbers in Ireland are **999 and 112** – know them by heart!
- Save these numbers in your phone in case of emergency
  - In Case of Emergency contact number (known as an ICE number)
  - TCD Campus Emergency Number **+353 1 896 1999**
  - Your Accommodation's 24/7 or emergency number
- Global Mobility Team
  - Please also keep the Global Mobility team updated via [global.mobility@tcd.ie](mailto:global.mobility@tcd.ie) in case of emergency so we are aware and can assist

# Practical Info for Study Abroad

- See Pre-Arrival Guide for lots of practical info
- Banking
  - Opening an Irish bank account is optional for study abroad students
- Email
  - Forward your home university email to your Trinity email – important that you check both!
- Home University/Study Abroad Programme
  - Make sure you check in with your home university and/or study abroad programme regarding credit transfer, credit load, etc.
- Number of credits per area of study
  - Enrol in classes across your approved areas of study as needed
  - **No minimum percentage** rule per department for non-EU
- Accommodation
  - Make sure you know processes/policies in advance, i.e. guest policies, replacing lost keys, etc.



The University of Dublin





# Checklist

## Trinity Registration and set Up

- Complete Trinity Registration at [my.tcd.ie](https://my.tcd.ie)
- Set up your Trinity email, Wi-Fi, Blackboard and more:  
<https://www.tcd.ie/itservices/students/>
- Upload your image to <https://tcard.tcd.ie> and follow instructions from AR to get your TCD ID card

## Orientation and Enrolment

- Attend orientation sessions and any sessions held by your areas of study
- Complete Module Enrolment and make final changes prior to **31st January**
- Confirm module enrolment with home university or study abroad programme

## Life in Dublin

- Follow advice from the Global Room to complete immigration registration
- Get a Leap card
- Open an Irish bank account (optional)

## Communications

- Forward your home university email to your Trinity email
- Check for emails from SA team throughout the semester



# Sustainability at Trinity

- Trinity & Sustainability

- Key area of commitment in Trinity's Strategic plan
- Trinity is committed to addressing the challenge of achieving a sustainable and healthy planet
- While it isn't the responsibility of a single individual, it takes the combined, collaborative effort and enthusiasm of many
- See more about Trinity's commitment to sustainability here: <https://www.tcd.ie/provost/sustainability/>

- Independent Student Travel

- Always consult Dept of Foreign Affairs travel advice: <https://www.dfa.ie/travel/travel-advice/> when considering independent travel
- Considering your Carbon Impact
  - Any students planning independent travel should consider the carbon impact carefully – calculate here: <https://www.atmosfair.de/en/>
  - Take advantage of everything Ireland has to offer
  - Consider combining trips and taking advantage of European rail systems
  - Replacing one round-trip flight to the continent with a train journey within Ireland would save 750kg of CO<sub>2</sub>e (using 3,000km as approx. roundtrip distance from Dublin – Barcelona)
  - Let us know how you considered your carbon impact!

## Emissions if you travel by

Flight	750 kg CO <sub>2</sub> e
Car (petrol)	570 kg CO <sub>2</sub> e
Car (diesel)	450 kg CO <sub>2</sub> e
Car (etanol)	330 kg CO <sub>2</sub> e
Car (gas)	120 kg CO <sub>2</sub> e
Electric Car	30 kg CO <sub>2</sub> e
Bus	177 kg CO <sub>2</sub> e
Train	0 kg CO <sub>2</sub> e
Subway	0 kg CO <sub>2</sub> e
Boat	510 kg CO <sub>2</sub> e

## Distance of trip in km

Source: <https://www.goclimat.com/travel-calculator>

## Sustainability Guides.



## Sustainability Initiatives

We already have buildings with rainwater harvesting, solar thermal (water heating) panels, green roofs and biodiversity gardens. Further innovations are being planned for, and designed into our new buildings.



# Trinity College Dublin

Coláiste na Tríonóide, Baile Átha Cliath

The University of Dublin

## Q&A

Please submit your questions in the chat or Q&A

## THANK YOU

Enjoy your time at Trinity, and reach out to us at [global.mobility@tcd.ie](mailto:global.mobility@tcd.ie)